

# CLAPHAM

M A G A Z I N E



BOOK

AUTUMN EDITION 2023

# Welcome

Welcome to the Autumn edition of the Clapham Park magazine. In this edition, we wrap up the summer festivities, and look ahead to what is to come at Clapham Park later this year, as well as keeping you up-to-date with all the activities around the neighbourhood.

We're keen to keep the community as informed as possible about activities and developments across the estate, in the most environmentally-friendly way. That's why we're aiming to make future editions of this magazine digital.

If you would like to receive this magazine direct to your inbox, please email [info@yourclaphampark.co.uk](mailto:info@yourclaphampark.co.uk). It will also continue to be available on [www.yourclaphampark.co.uk](http://www.yourclaphampark.co.uk) and limited numbers of printed copies will be available to pick up at the Cube and MTVH's New Park Road office.

## Contents

- 03 MYSCRIPT
- 04 Making Families Stronger in Clapham Park
- 05 Stronger Futures
- 06 Recent Events
- 07 Meet the Team
- 08 Employment, Training and Apprenticeships
- 09 Construction Update
- 11 Winter Energy Tips

We want to hear from you, please see the back cover.

## MYSCRIPT

For young people drawn to the world of drama and film, the MYSCRIPT Programme at the Clapham Park Cube is the perfect way to hone your life skills in a creative setting. MYSCRIPT is a film production programme which focusses on creating short films, acting, and networking.

Teaming up with **Metropolitan Thames Valley Housing (MTVH)**, **Step Now**, **The Race Equality Foundation**, **Inzyme** and funded by **Netflix** and the team behind their hit show **Top Boy**, MYSCRIPT offers participants a clearer understanding of themselves, helps them achieve their aspirations and inspires the creation of content and art that promotes positive, healthy choices.

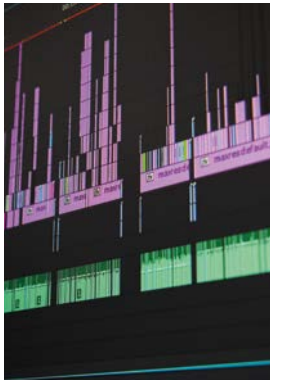
So far, the programme has hosted discussions, resulting in the creation of impactful films and scripts, has helped participants to access networking opportunities and potential job placements in the film world, and introduced initiatives for families which have been showcased at special programmes and local film festivals.

Participating in MYSCRIPT is about more than just filmmaking. It's about growth, discovering your potential, and understanding how to unlock your talents.

### Learn more

If you're interested in getting involved with MYSCRIPT, please contact Wahid Islam at [wahid.islam@mtvh.co.uk](mailto:wahid.islam@mtvh.co.uk) or on **07717 720584**.

MYSCRIPT has helped participants to access networking opportunities and potential job placements in the film world





# Making Families Stronger in Clapham Park

Clapham Park is helping families through its Strengthening Families, Strengthening Communities (SFSC) programme. Now in its third year, SFSC gives parents a place to learn, share and grow, no matter where they come from or what challenges they’ve faced.

The core goal of the programme is to help parents with day-to-day challenges. Whether it’s helping kids do better in school, or building stronger bonds, SFSC offers practical tips and advice.

SFSC celebrates the different cultures and backgrounds in Clapham Park, making sure everyone feels included and supported.

Thanks to SFSC, many families in Clapham Park are finding better ways to face challenges and come together. It shows that with a bit of help and understanding, every family can shine.

### Find out more

If you’re interested in joining this year’s group, please contact Wahid Islam at [wahid.islam@mtvh.co.uk](mailto:wahid.islam@mtvh.co.uk) or on 07717 720584.



# Stronger Futures

Stronger Futures is a youth engagement project designed to reduce the risk of violence faced by young people aged 8-18 across Lambeth. The project runs daily from the Clapham Park Cube and the Moorlands Community Centre.

Stronger Futures is a 2-year project offering entertaining and aspirational activities for young people and is funded by the Mayor of London’s Violence Reduction Unit (VRU).

The project will deliver a variety of activities including:

- Sports and games
- Content creation using the latest AI applications
- Drama, including script writing and film making
- Music and music production



If you are interested in taking part in the programme, please contact Wahid Islam at [wahid.islam@mtvh.co.uk](mailto:wahid.islam@mtvh.co.uk) or on 07717 720584.

### Learn more

To learn more about the Mayor’s VRU, scan the QR code below or visit their website at <https://www.london.gov.uk/programmes-strategies/communities-and-social-justice/londons-violence-reduction-unit/our-programmes>





# Government Ministers Visit Clapham Park

A programme of urban regeneration lies at the core of the governments housing policy, and the Clapham Park partnership is helping to achieve this goal by delivery high quality new homes, of which 53% will be affordable tenures.

In July, the Countryside Partnerships and MTVH joint venture (JV) team had the pleasure of hosting Levelling Up, Housing and Communities Minister, **Baroness Scott OBE**, who was given a site tour of Clapham Park to view the progress on the delivery of over 2,500 new homes.



On Tuesday 25th July 2023, **Tom Copley**, the Deputy Mayor of London for Housing and Residential Development, undertook an official visit to Clapham Park. Mr Copley met with representatives from MTVH and Countryside Partnerships, who presented an overview of the £1.2bn regeneration of Clapham Park.

The tours showcased how the JV are supporting the existing community in addition to the new homes we are delivering. This includes the creation of non-residential space that will see a new community centre, a market square, two parks, commercial and retail space.



# Summer Fun Day

The highlight of our summer calendar at Clapham Park, the Clapham Park Summer Fun Day, was a great success. Residents of all ages from across the estate came together to enjoy events filled with laughter, games and community spirit. The vibrant atmosphere was complemented by fantastic costumes and dances, a bouncy castle, fun face painting, a delicious barbecue and a brilliant DJ who brought smiles to every face. A big thank you to everyone who joined us in making this day memorable. We hope you enjoyed it as much as we did!



# Meet the team



## Rosalyn, MTVH's new Social Value Manager

**Rosalyn Springer** has joined the team working on the regeneration of Clapham Park. She'll be working with MTVH, Countryside Partnerships, stakeholders and residents to help ensure the delivery of much needed homes for the community. Rosalyn grew up in social housing and spent much of her housing career working in resident facing roles. She is looking forward to getting to know residents and partner organisations, and working together to help ensure the delivery of the joint venture's community and placemaking commitments alongside the much needed homes for the community.

Rosalyn's contact details can be found below:  
[rosalyn.springer@mtvh.co.uk](mailto:rosalyn.springer@mtvh.co.uk)



## Katherina, Clapham Park's new Resident Liaison Officer

The Clapham Park team are now supported by **Katherina Robinson**, who is the lead Resident Liaison Officer for Countryside. Kat has over 20 years' experience and she has been working at Countryside Partnerships for the last 14 years working on similar major regeneration schemes around London.

Kat's contact details can be found below:  
**07867 195 118**  
[katherina.robinson@countrysidepartnerships.com](mailto:katherina.robinson@countrysidepartnerships.com)



# Employment, Training & Apprenticeships

## Destiny – Countryside Partnerships’ Virtual Work Experience Programme

Destiny is an online work experience course delivered in partnership with Springpod. The course is for students in year 10 and upwards in London. In this programme, you’ll get a chance to take part in a four-week virtual work experience course, spread over 5 hours. Two Destiny programmes have taken place to date in November 2022 and February 2023. In total, over 100 students from Lambeth and surrounding boroughs have taken part in the programme to date.

The programme will provide valuable insights and introductions to a range of careers within the housebuilding sector – from construction, quantity surveying and development, through to sales, marketing and customer service.

On this particular programme you’ll learn about Countryside Partnerships, their values, culture and purpose, how Countryside Partnerships develops communities and how you should market yourself if you would like a career in housebuilding or construction.

Once enrolled, the programme will take 5 hours to complete and if students enjoy the course and are interested in learning more, they can complete further optional projects and request to do in-person work experience with Countryside Partnerships.

The programme has 7-modules on career paths at Countryside Partnerships, with activities and quizzes to fill out and the chance to speak to industry professionals. At the end of the programme, you’ll receive a certificate of completion. You can complete the programme at a pace that suits you, all while adding value to your job and apprenticeship applications and UCAS personal statements.

### Find out more

The programme runs from **23rd October – 3rd November**

The application deadline for this programme is **18th October**

Scan the QR code for more info, or visit our website at **www.springpod.com**



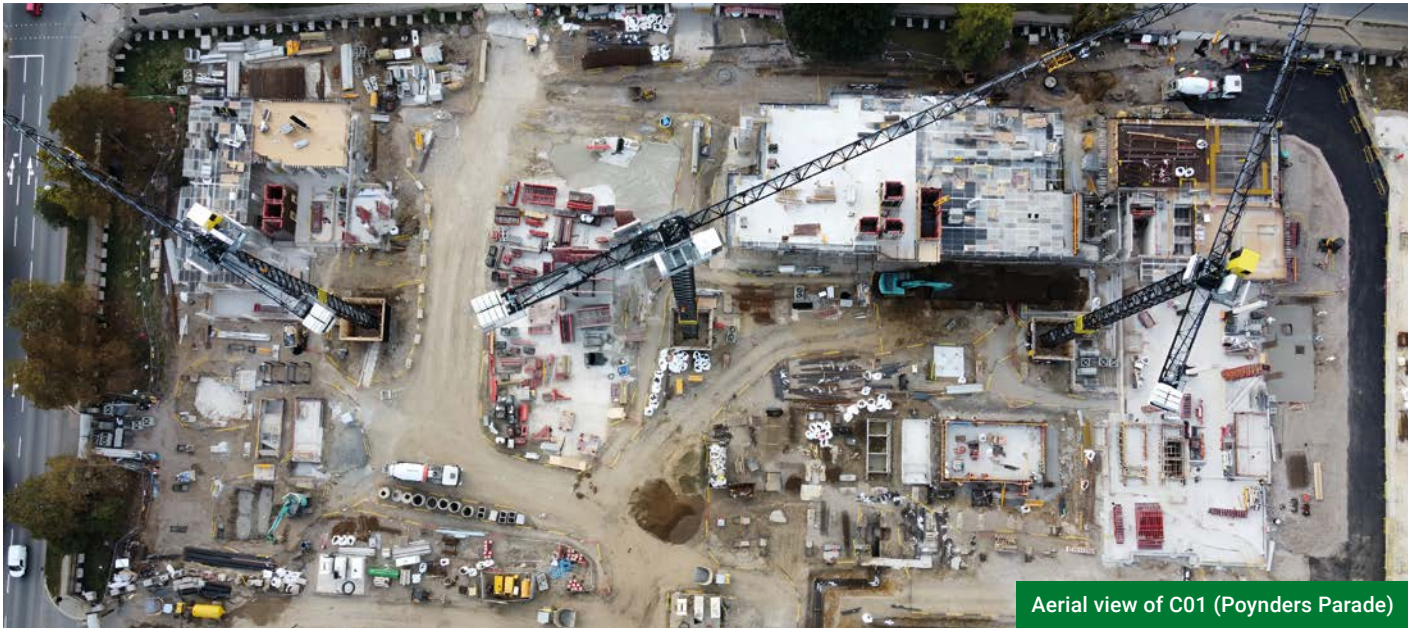
# Construction Update

As the regeneration of Clapham Park progresses, the team would like to give you an update on the progress of works being undertaken.

Since the publication of the Spring magazine, piling works have now been completed on Site B01 (Allingham Road / Clarence Crescent) and Site C01 (Poynders Road / Clarence Avenue). Two cranes are now operational on B01 and three on C01. The site welfare facility is operating from Morten Close.

The foundations have now been completed for B01, and above ground construction works are progressing. On site C01, the foundations for the building are progressing with half of the eight concrete cores complete.

Countryside Partnerships is part of the Considerate Constructors Scheme and is committed to minimising disruption for residents during construction works. This includes adhering to agreed working hours on site, monitoring and managing dust, adhering to the Traffic Management Plan, as well as keeping areas clean and tidy.



Aerial view of C01 (Poynders Parade)



# Construction Update



## Keith Shaw House and Donna Mews update

The handover of the much-awaited Donna Mews is set to take place later this year with Keith Shaw House set for January 2024. The project comprises 41 affordable flats, nine houses and two new shops. The scheme was delivered by MTVH, in partnership with Kind&Co.

The landscaping is near completion, transforming the area into a green haven for residents.

The new homes include energy-efficient measures to help keep bills down, connection to the neighbourhood’s efficient district heating system, and the creation of new communal spaces for residents. The completion of Keith Shaw House and Donna Mews will breathe new life into the neighbourhood, revitalising it as a dynamic and vibrant community hub.

# Winter Energy Tips

As the winter months approach, we’re providing some insights to help you save money and efficiently heat your home. These simple steps can make a significant difference to your comfort and your heating bills.

- 1 Test your heating before the colder weather arrives to ensure it is working as you would expect
- 2 Get to know your controls and how to operate your system so it heats the rooms you use, when you would typically be using them
- 3 Consider turning down your thermostat by just one degree to save money
- 4 Remember, you use heat whenever you use hot water. So, opt for a water-saving showerhead and choose showers over baths to conserve water. Consider using a timer to try and take shorter showers to reduce energy use further

As energy consumption rises during the winter months, we encourage you to keep up with your energy payments. By doing so, you’re not only covering your energy usage but also ensuring the well-being of your **With Energy** account.

## Find out more

Our team is dedicated to supporting you in any way that we can. If you have any inquiries, feel free to reach out to our customer service team at [hello@with.energy](mailto:hello@with.energy) or call us at **0333 8000 11** (Monday to Friday, 9 am to 5 pm).






# We want to hear from you


Do you have a story you'd like to share with your neighbours? Would you like to contribute in some way? We're interested in hearing about your activities and shine a spotlight on events in the community! Tell us if there's something you'd like to see more of in the pages of Clapham Park Magazine by contacting:

info@yourclaphampark.co.uk  
or on tel. 0800 669 6007

 @clapham\_park

 @clapham\_park

 @mettvh

 www.yourclaphampark.co.uk



## THE OFFICE IS OPEN:

91-93 New Park Road  
SW2 4AX

Illustration source credit:  
Vecteezy.com (Page 6)